

The Alpine Convention



An international treaty for the protection and sustainable development of the Alps

Antonio Ballarin Denti

Dept. of Physics - Catholic University, Brescia

Italian National Focal Point

The Alps

Inhabitants: 13,6 million
Territory: 190 600 km²



Aims of the Alpine Convention

- promoting sustainable development in the Alpine area
- protecting the interests of the people living in the Alps
- embracing the environmental, social, economic and cultural dimensions of the Alps.

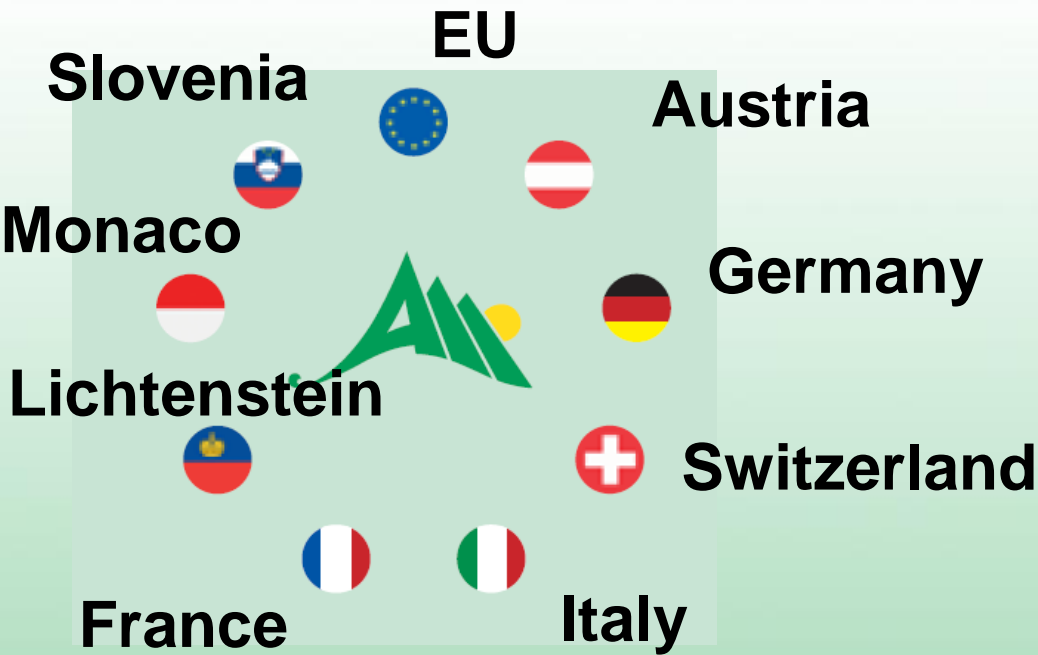


Short history:



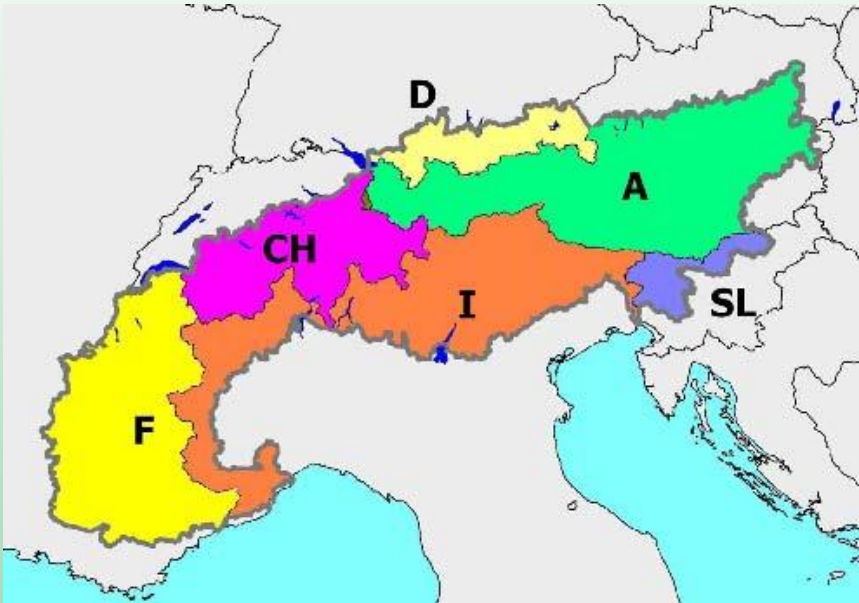
1991	signing of the Framework Convention
1995	Convention enters into force in all the countries
2002	8 Protocols enter into force
2003	establishment of the Permanent Secretariat

Contracting Parties :



Member States percentage of Area and Population

	Area	Population
Italia	27,3 %	30,1%
Austria	28,7%	23,9%
France	21,4%	18,0%
Switzerland	13,2%	12,8%
Germany	5,8%	10,1%
Slovenia	3,5%	4,7%
Monaco	0,001%	0,2%
Lichtenstein	0,008%	0,2%
ALPS	190.600 km ²	13,6 million



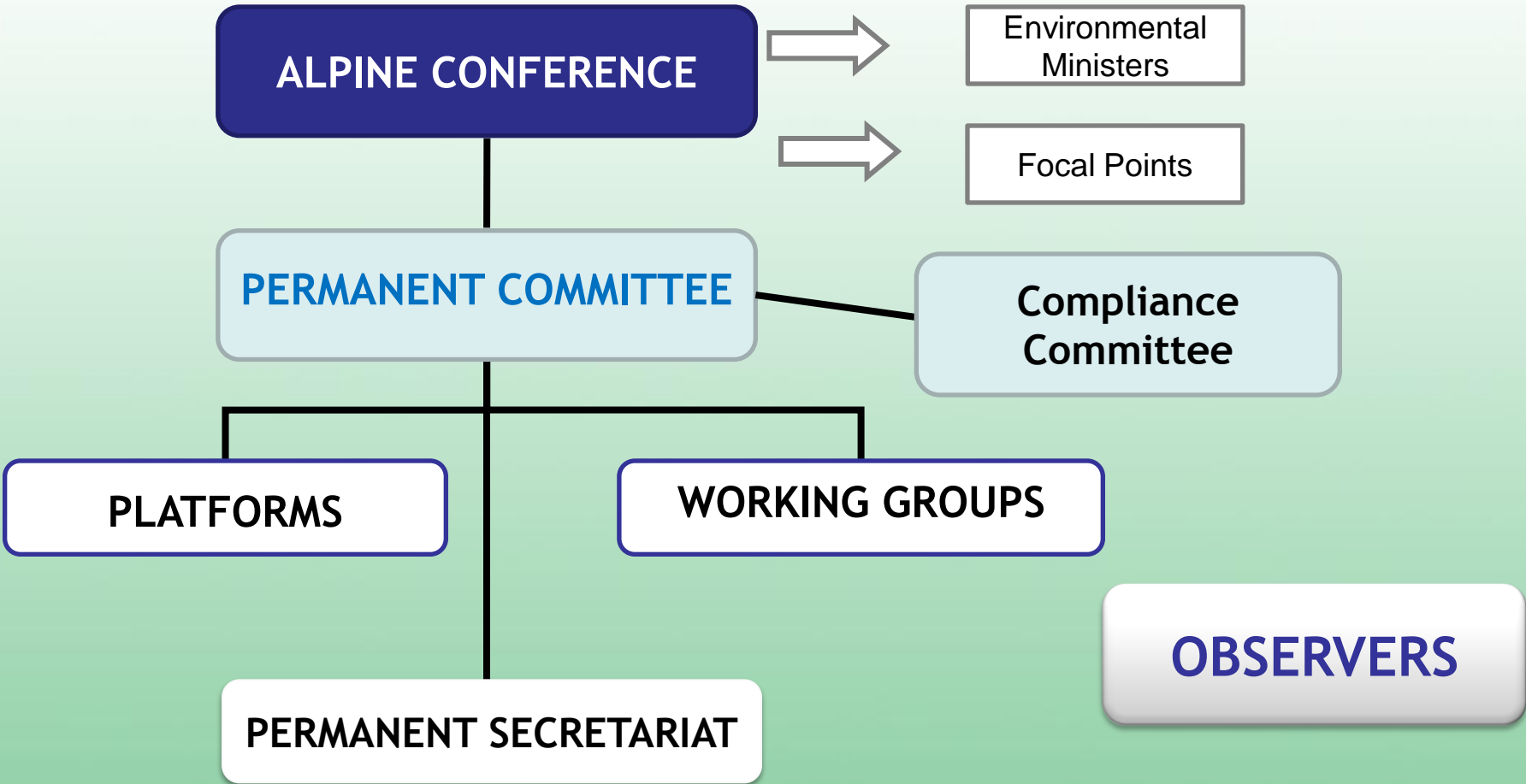
Nature of the Alpine Convention and its Protocols

- Focus on cooperation (in particular, on research);
- environmental protection considering development perspective;
- efforts required at various levels: national, regional and local (most important);
- Dynamic aspect: implementation requires a continuous effort from the Contracting Parties.

Main Instruments of the Alpine Convention

- Activities of the Working Groups;
 - multilateral projects of the Contracting Parties;
 - activities of the Permanent Secretariat;
 - informing and communicating;
 - observing and understanding;
 - exchanging experiences.
- Cooperation with networks and other partners is essential.

Alpine Convention Organogram



Observers

Exchange of information, experience and good practices in order to implement the objectives of the Alpine Convention

- AEM
- Alpe Adria
- Arge Alp
- Alpine Town of the Year
- CIPRA International
- Club Arc Alpin
- Euromontana
- FIANET
- International Steering Committee of the Network of Protected areas
- IUCN
- Managing Authority of the European Cooperation Programme Alpine Space
- Pro Mont Blanc
- UNO/UNEP-ROE
- ISCAR

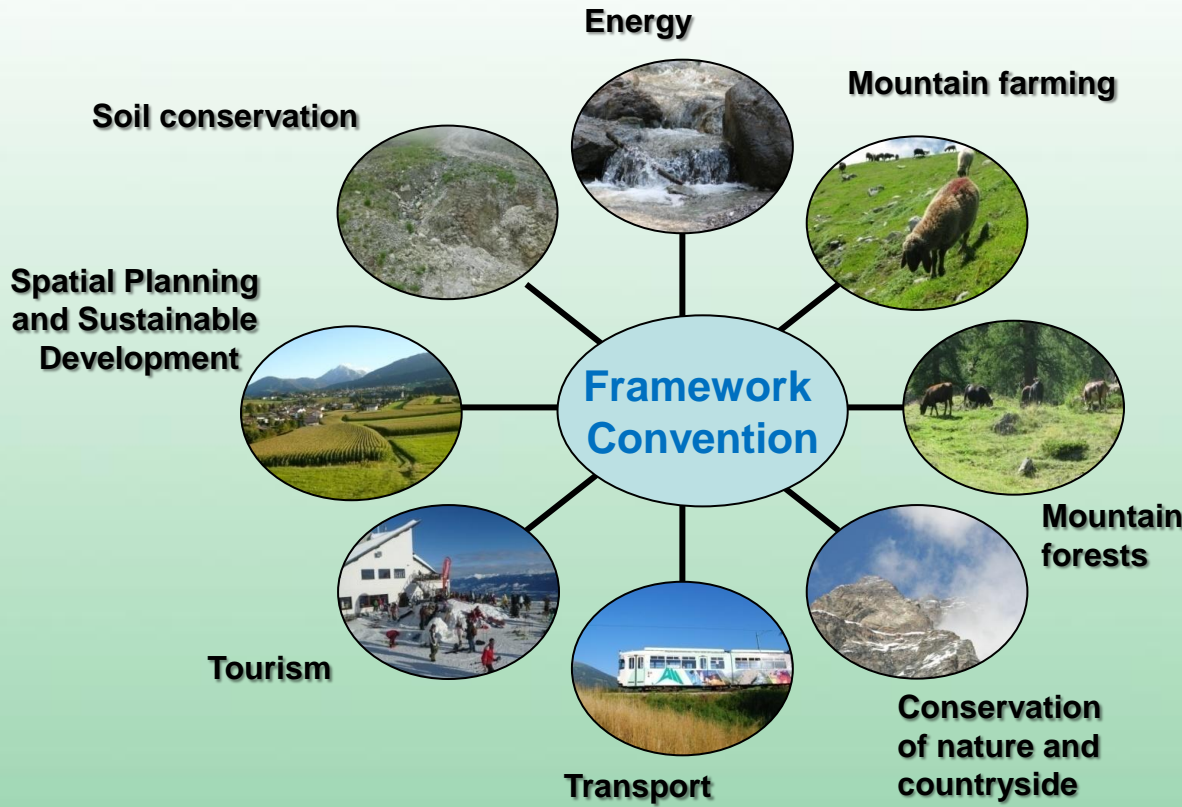


Framework Convention and its Protocols

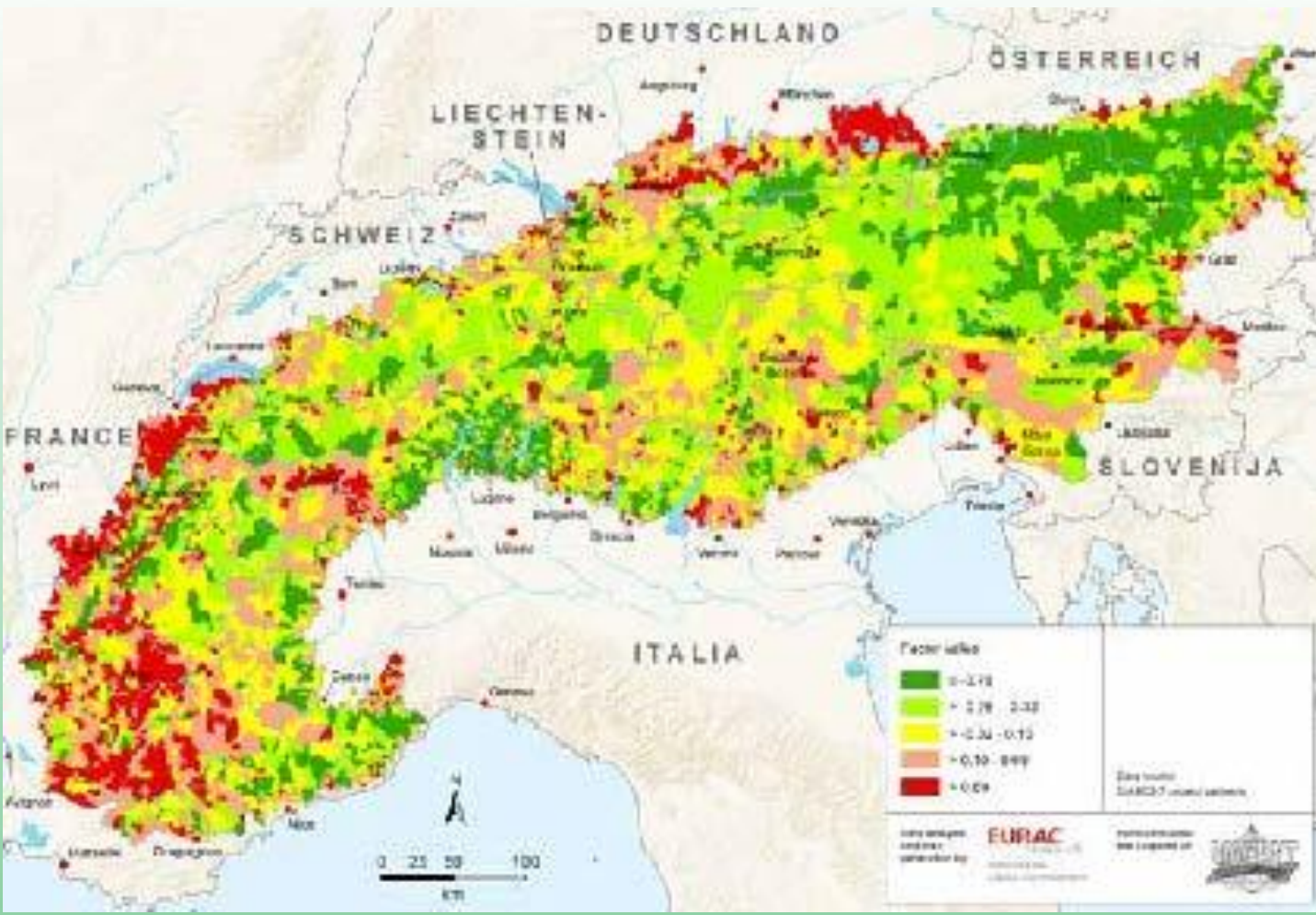
The Convention is a **framework** that sets out the basic principles of all the activities of the Alpine Convention and contains general measures for the sustainable development in the Alpine region.

In the Protocols, **concrete steps** to be taken for the protection and sustainable development of the Alps are set out.

Signed and ratified Protocols are legally binding in the Contracting party.



Spatial Planning and Sustainable Development Protocol



alparc

Grands espaces protégés des Alpes - Grandi aree protette delle Alpi Grossflächige Schutzgebiete der Alpen - Zavarovana območja z veliko površino v Alpah

Zone d'application de la Convention Alpine
Limite di applicazione della Convenzione delle Alpi
Anwendungsgebiet der Alpenkonvention
Območje izvajanja konvencije

Limite d'Etat - Confine di Stato
Staatsgrenze - Državna meja

Ville - Città - Stadt - Mesto

Réseau hydrographique - Rete idrologica
Gewässernetz - Vodotoki

Legend:

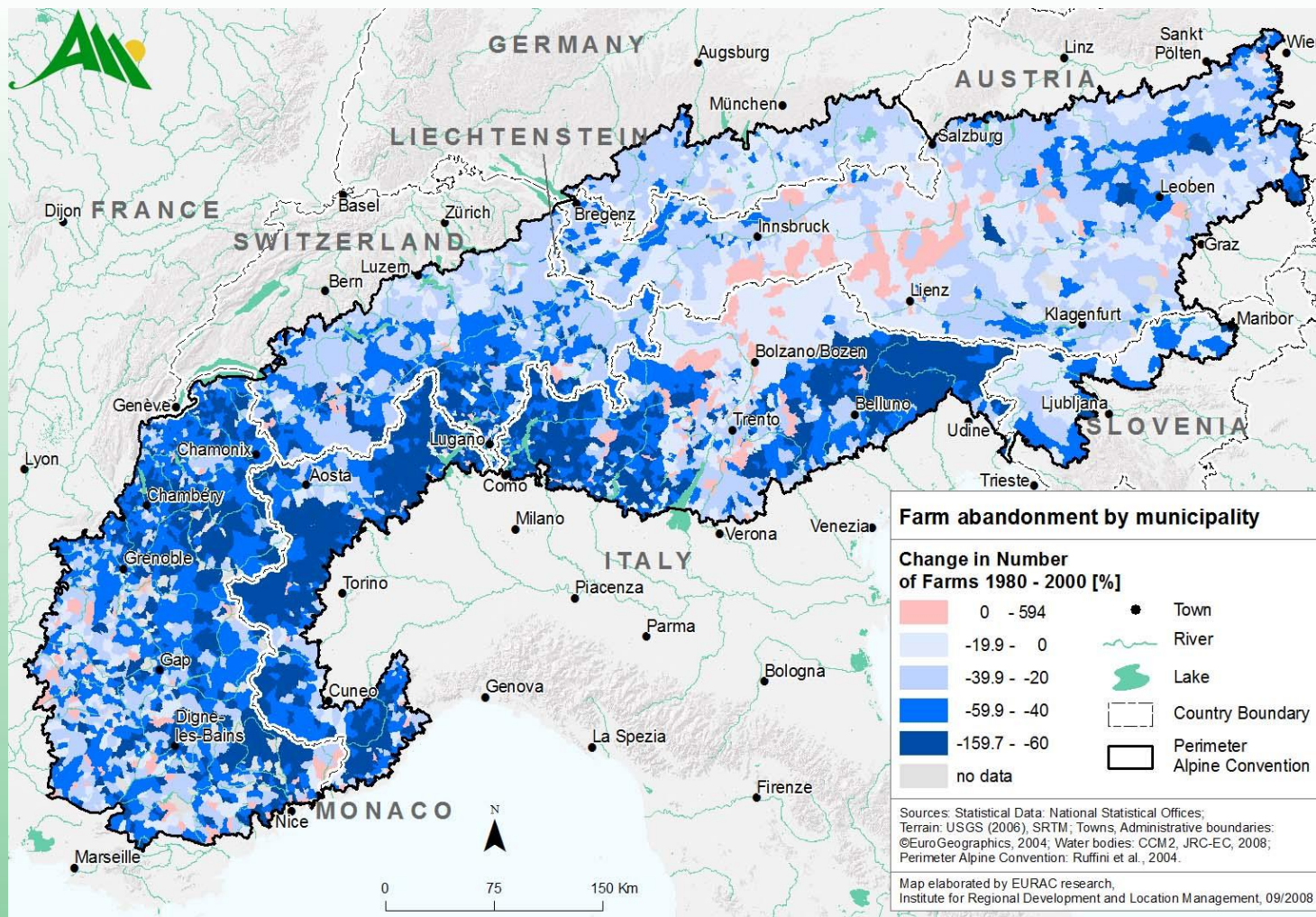
- Parc national - Parco Nazionale**
Nationalpark - Narodni park
- Zone périphérique - Aire optimale d'adhésion***
Zona periferica - area ottimale di adesione*
- Außenzone - Optimales potentielles Einzugsgebiet***
Robno območje - Področje optimalnega clasta*
- Reserve naturelle - Riserva naturale**
Naturerschutzbereich - Naravni rezervat > 100 ha
- Parc naturel régional - Parco Regionale o Naturale**
Regionaler Naturpark - Regijski park > 100 ha
- Protection particulière**
Sonderschutzform
Posebna zaščita > 100 ha
- Patrimoine mondial naturel de l'UNESCO**
UNESCO Patrimonio naturale mondiale
UNESCO svetovna naravna dediščina
- Reserve de biosphère - Riserva di biosfera**
Biosphärenreservat - Biosferni rezervat
- Reserve naturelle géologique**
Riserva naturale geologica > 100 ha
- Geologisches Naturschutzgebiet**
Geološki naravni rezervat
- Parcs en projet - Progetti di parchi**
Parkprojekte - Parki v ustanavljanju

Datar **Région PACA** **RhôneAlpes** **Chambéry**

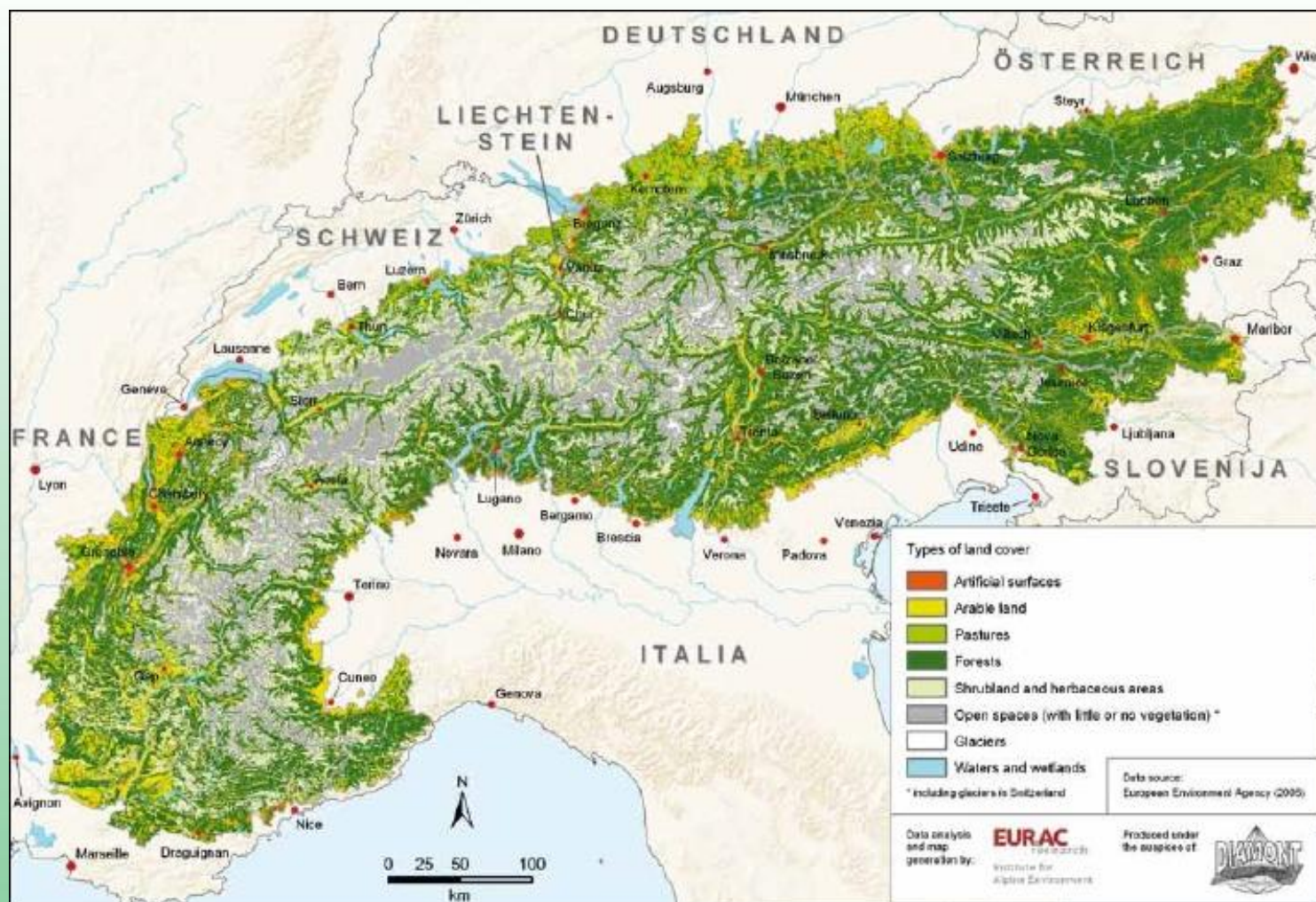
Scale: 0 25 50 Km

Contact: info@alparc.org

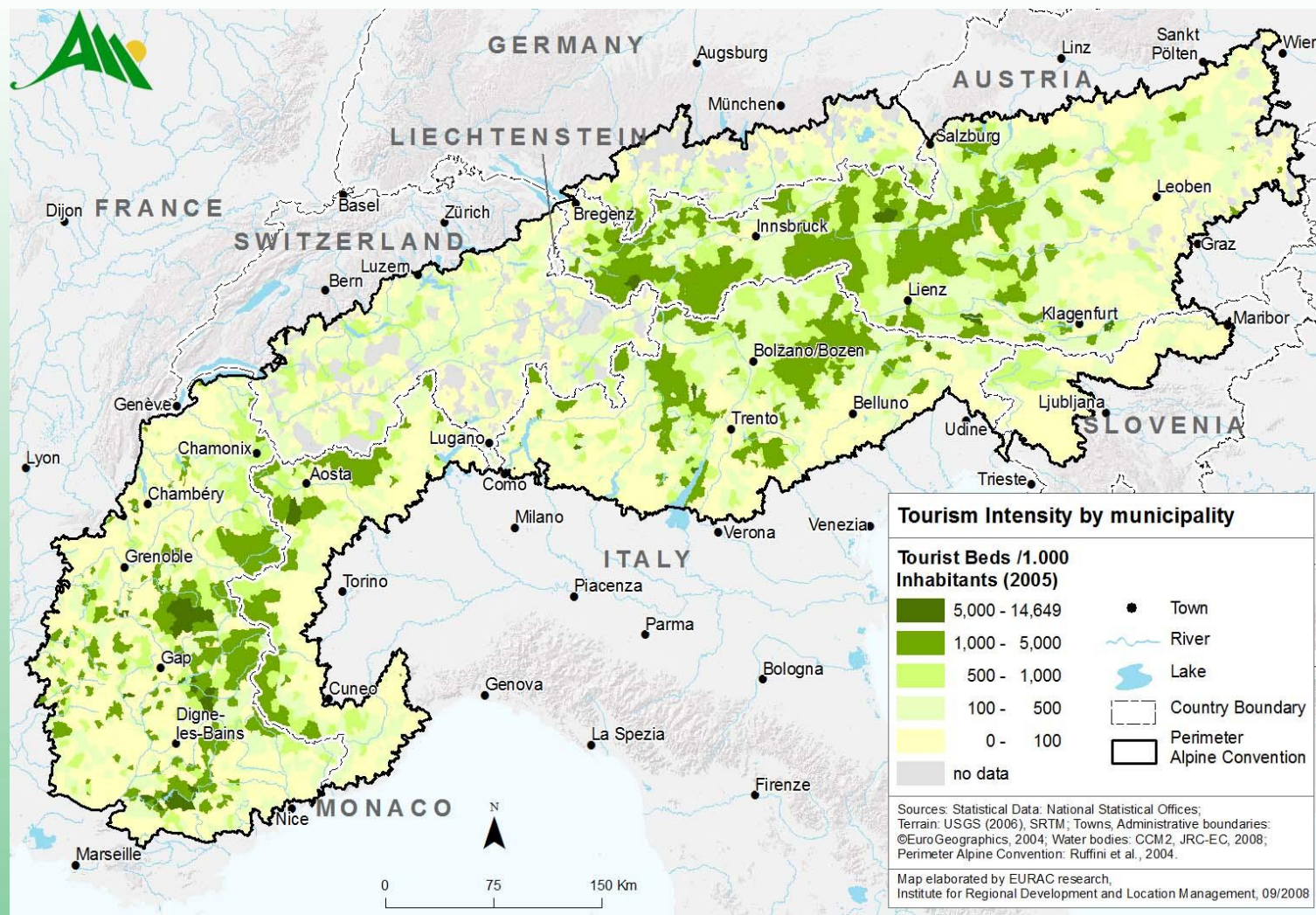
Mountain Farming Protocol



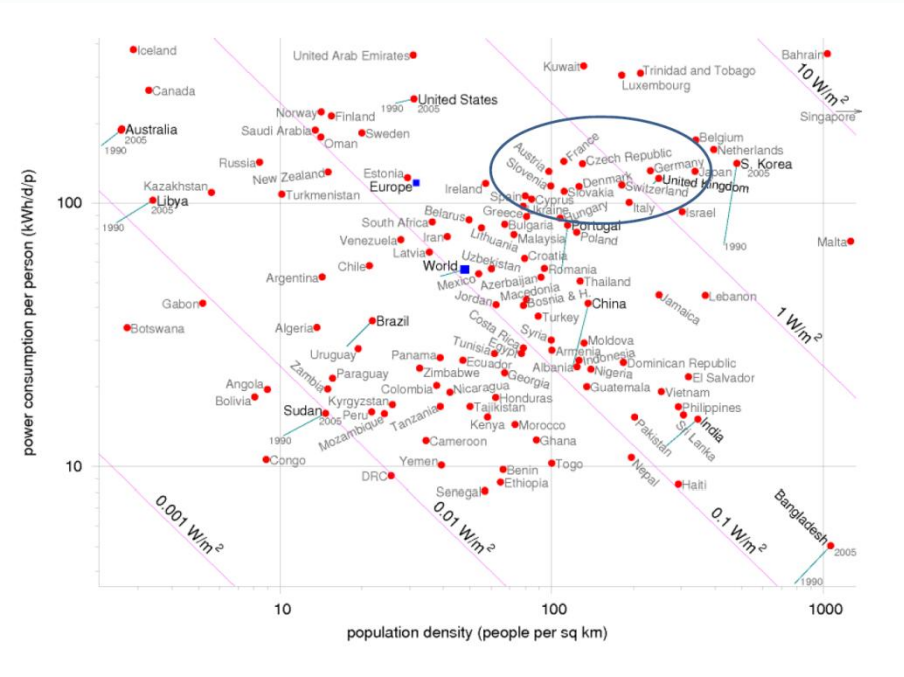
Mountain Forests Protocol



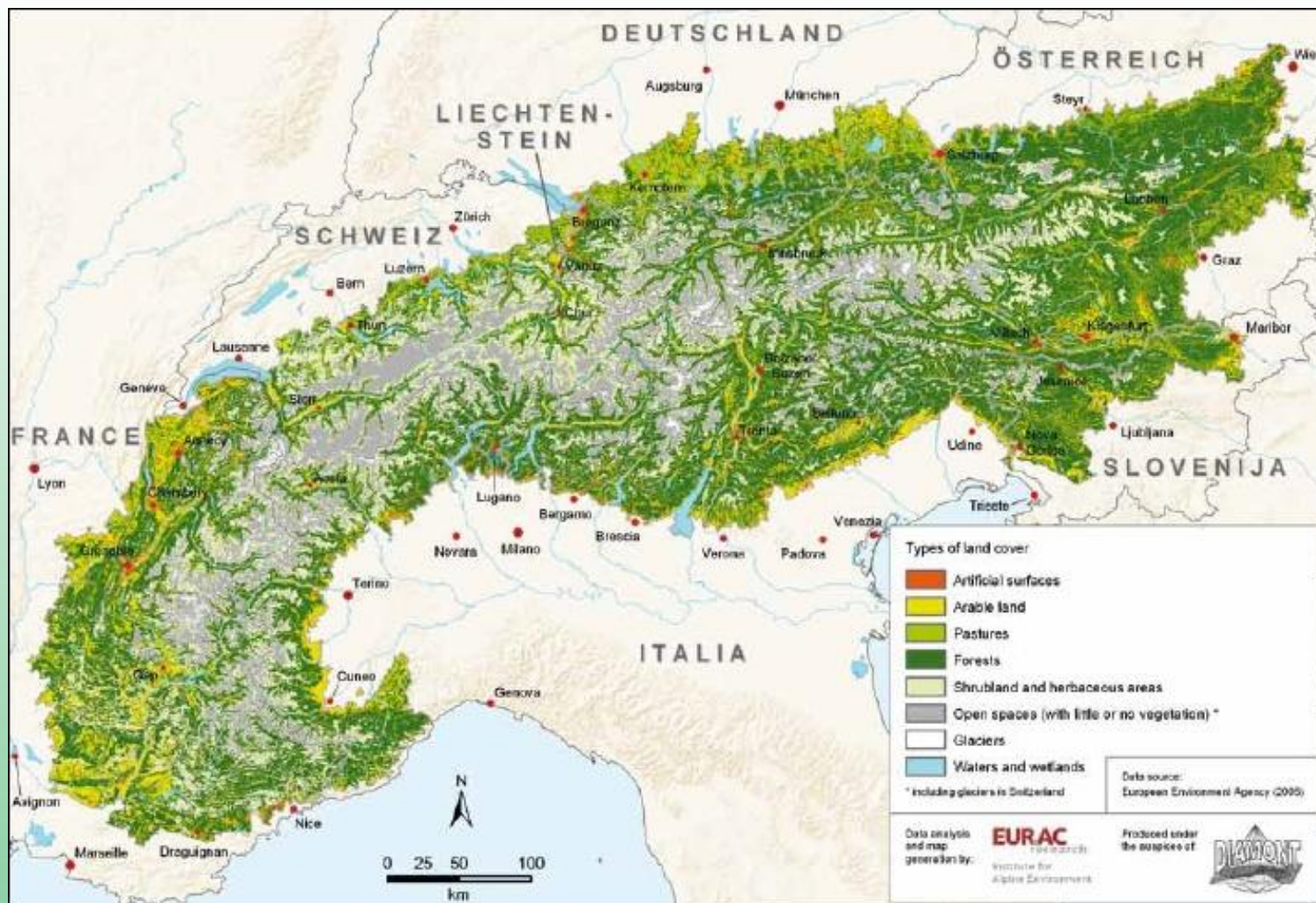
Tourism Protocol



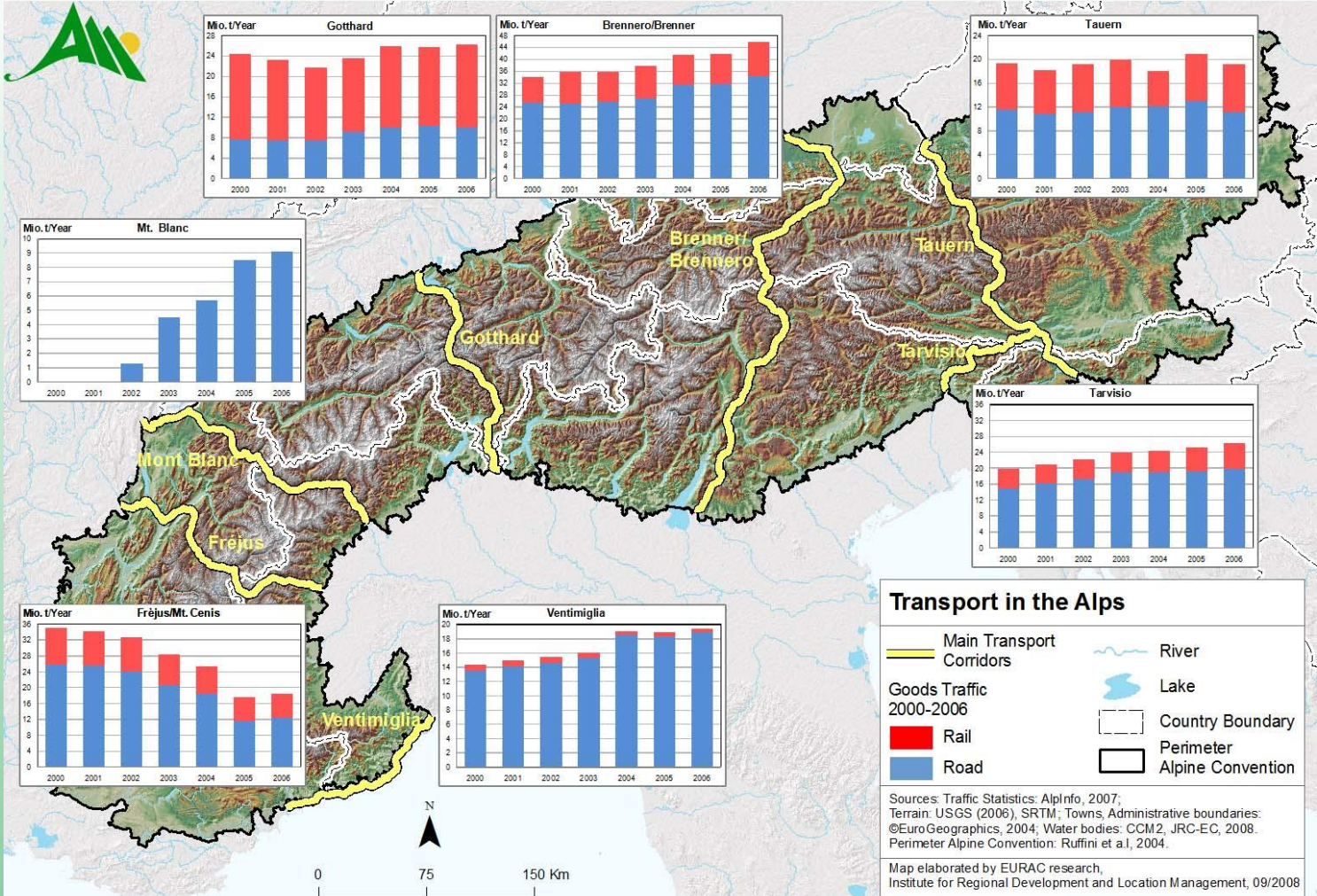
Energy Protocol



Soil Conservation Protocol



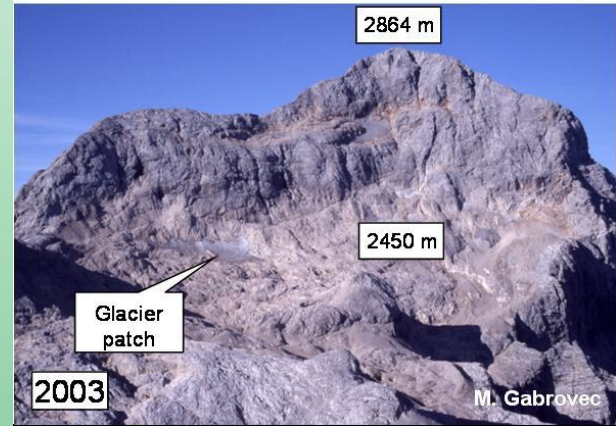
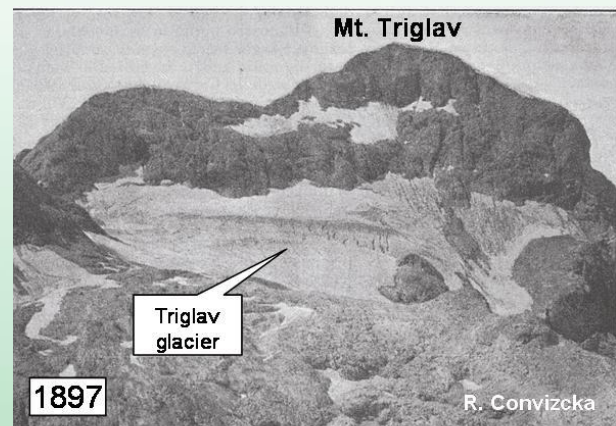
Transport Protocol



Declaration on Population and Culture



Declaration on Climate Change



Declaration on Climate Change

- ... with respect to the progressive climate change for the future, indicates that it is necessary to develop appropriate strategies and activities for the Alpine area for the **adaptation** to the consequences that will result from the climate change.
- Average temperature increase since the pre-industrial age is clearly above the global average in this area → visible in: increase of the threat through **natural hazards**; visible effect in the form of the progressive **melting of glaciers and the reduction of the permafrost**.
- Recommendations for action to avoid a further progressive climate change.

Climate Action Plan



- Recommending alpine-specific measures;
- long-term initiatives, joint projects, exchange of experiences;
- precise schedule;
- support scientific research projects;
- addressing a variety of subjects:
 - public : at local, regional or national level;
 - private: influencing the behavior to cope with climate change.

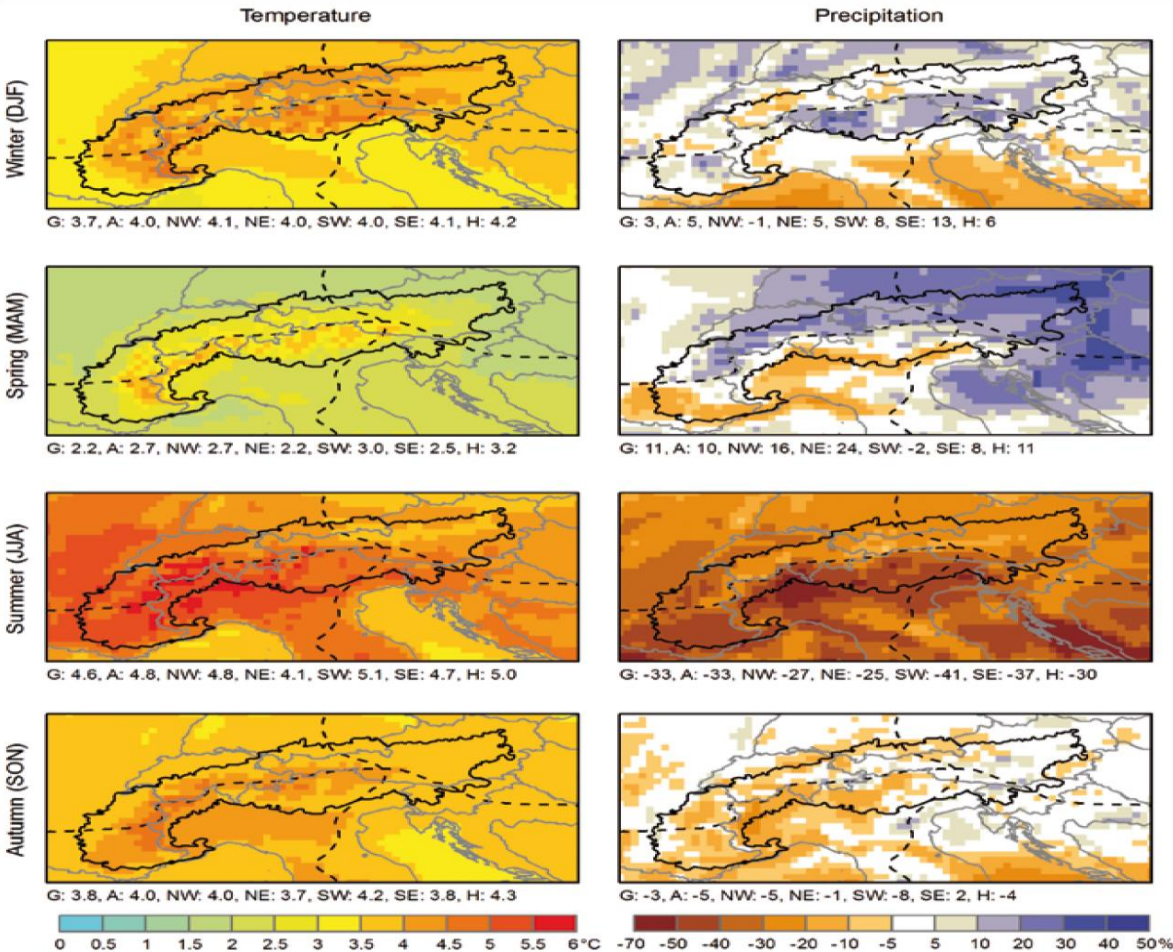
A common adaptation strategy for the Alpine region



Adaptation plans for mountain areas: why?

- ✓ The **increase of temperature** in the Alpine area in the last thirty years **is three times higher** than the average increase in the northern hemisphere.
- ✓ The **rainfall pattern is changing** in terms of reduction of rainy days and increase in intense rainfall events .
- ✓ The higher temperatures are accelerating the **cryosphere melting processes** (glaciers, permanent snow and permafrost) and increased the associated risks .
- ✓ Acceleration of melting processes and changes of the rainfall patterns, will cause significant **changes in the hydrological regime** (reduction of the summer run-off and increase in winter run-off) with consequences in the **geological risks** and **future availability of water resources** .
- ✓ The Alpine region is characterized by valuable **social and ecological features** by **high vulnerability to natural hazards** and it is also subjected to growing **anthropogenic and environmental pressures**.

Figure 2.6 Seasonal changes in precipitation and temperature up until the end of the 21st century, according to CLM scenario A1B



Note: Left: absolute difference in temperature. Right: relative difference in precipitation. Regional statistics: G = Greater Alpine Region, A = Alps, NW = north-western Alps, NE = north-eastern Alps, SW = south-western Alps, SE = south-eastern Alps, H = higher than 1 500 m. Seasons are: Winter (December, January, February) Spring (March, April, May), Summer (June, July, August), Autumn (September, October, November).

Source: EURAC, 2008, based on data from CLM climate scenarios (Lautenschlager *et al.*, 2008).

EU - policy context

- **GREEN PAPER** “*Adapting to climate change in Europe - options for EU action*” (2007)
- **WHITE PAPER** “*Adapting to climate change: Towards a European framework for action*” (2009)
 - ✓ Every effort must be made to adopt national or regional adaptation strategies at the member states
 - ✓ Adaptation strategies in Europe must be implemented in two phases

EU ADAPTATION STRATEGY (EAS) “*An EU Strategy on adaptation to climate change*” (April 2013)

- ✓ Encourage all Member States to adopt comprehensive adaptation strategies
- ✓ Provide funding to support capacity building on adaptation (LIFE, cohesion fund)
- ✓ Bridge the knowledge gap
- ✓ Further develop Climate-ADAPT platform
- ✓ Mainstreaming adaptation into EU policies

Adaptation strategy for Alpine countries: sectors

Physical environment

- 1) *Water resources (quantity and quality)*
- 2) *Land and soil degradation*
- 3) *Hydro-geological risk*

Human health and ecosystems

- 4) *Human health*
- 5) *Terrestrial ecosystems*
- 6) *Water ecosystems*
- 7) *Forests*

Economic activities

- 8) *Agriculture and food production*
- 9) *Energy*
- 10) *Tourism*
- 11) *Urban areas*

Critical infrastructures

- 12) *Transport*
- 13) *Cultural heritage*

Alpine adaptation strategy: steps forward

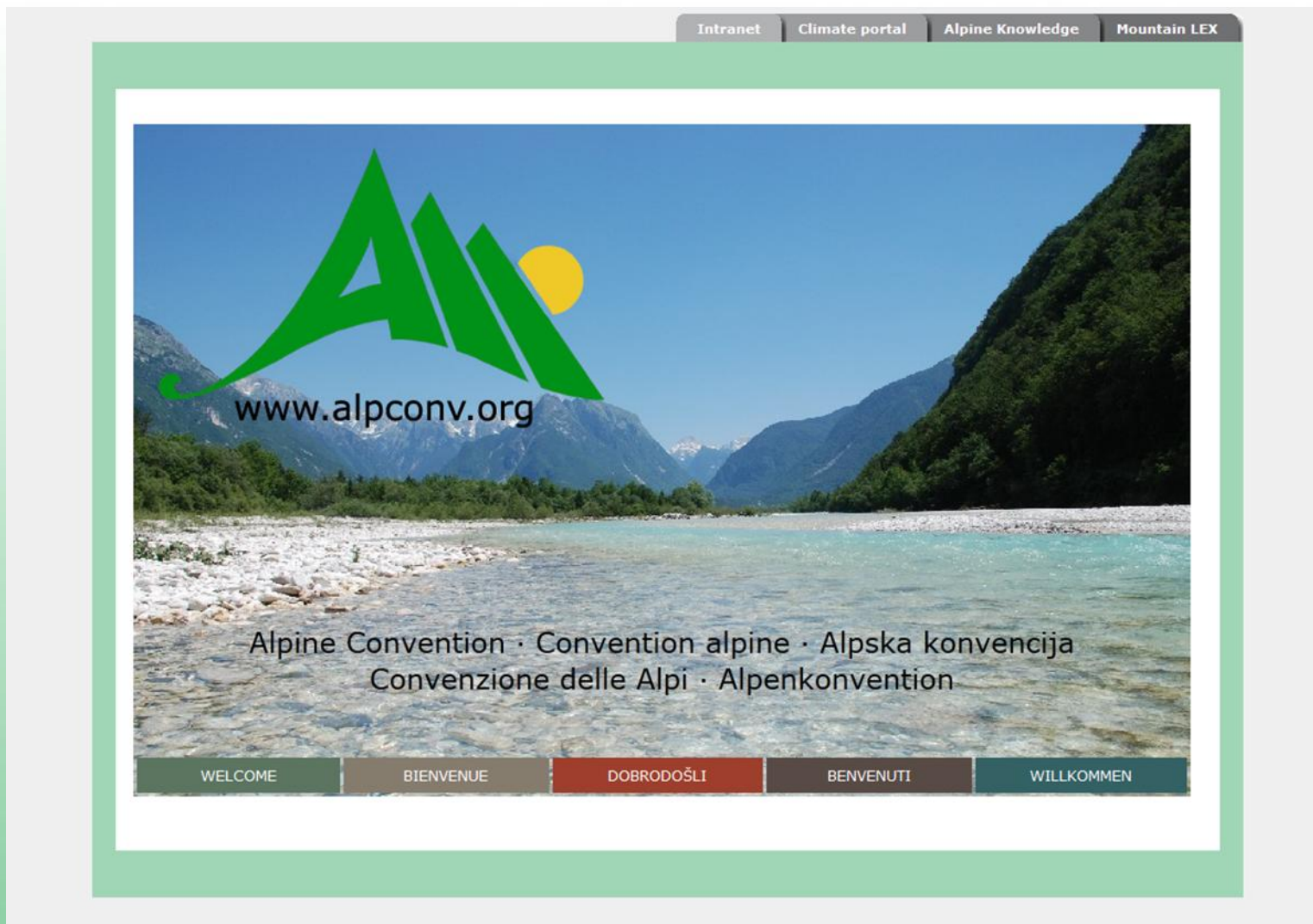
STEP 1- *climatological characterization*: current trends and future projections of the main climatic variables (rainfall, snowfall, temperatures, heat waves and storms)

STEP 2- Evaluation and estimate of the present and future *CC impacts for each sector* considering their *vulnerability* to present and future climate and *resilience* factors.

STEP 3- Evaluation of *existing adaptation measures* in each sector, and estimation of their adaptive capacity

STEP 4- Proposal of *future adaptation measures* and actions for each sector

The new Web site www.alpconv.org



Thank you for your attention!

www.alpconv.org

info@alpconv.org

